



RISE

The Blue Bench presents its fourth-annual art exhibition featuring **art made by survivors of sexual violence**.

RISE amplifies the **stories, voices, and healing journeys** of survivors in honor of Sexual Assault Awareness and Prevention Month.



“Roses in Crackle” by
Laura Green



In the state of Colorado, 1 in 2 women, 1 in 2 transgender/non-binary individuals, and 1 in 3 men experience sexual violence in their lifetime.

The Blue Bench is a **community of survivors, allies, and advocates** working to prevent sexual violence and build a safe and supportive metro Denver.

We work collaboratively to provide accessible, survivor-centered support services and empowering education.

“RISE is a place where I display my most vulnerable pieces to share with the world.”

– Tlalli
2023, 2024 RISE participant

“It was a really beautiful experience for me and I’m very grateful for The Blue Bench and everything they did to make it such a great success.”

– Kirstie K.
2023, 2024 RISE Participant

“Very diverse perspectives and powerful pieces.”

– Olivia D.
2024 RISE Participant

Partnering with The Blue Bench will help elevate survivor's voices in our community.

Gallery 5K Partner

- Presenting sponsor recognition at opening reception
- Partnership included in press release
- 2 social media posts in April (6.3K reach)
- Name/logo included in:
 - All RISE collateral
 - Month long exhibition, including all related events
 - March and April e-newsletters (30k reach)
 - The Blue Bench Annual report
 - Logo and link on our website

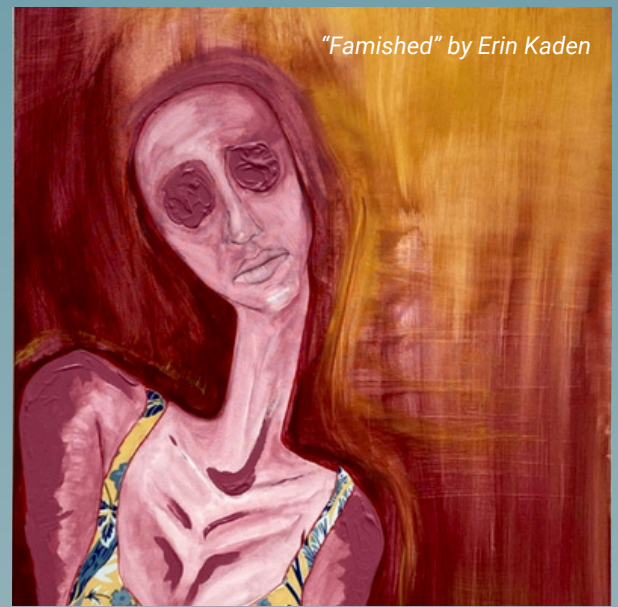
Exhibit 2.5K Partner

- 2 social media posts in April (6.3K reach)
- Name/logo included in:
 - Month long exhibition, including all related events
 - Logo and link on our website
 - March and April e-newsletters (30k reach)

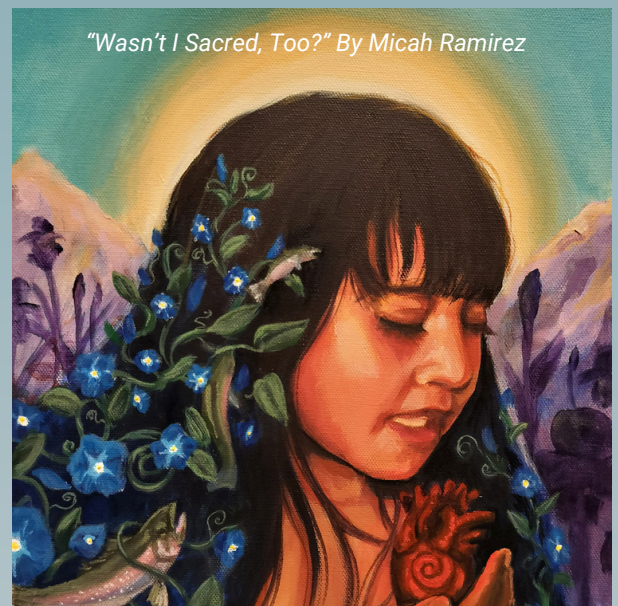
Motif 1K Partner

- 1 social media post in April (6.3k reach)
- Logo included in April e-newsletter (30k reach)

*Not seeing the sponsorship you're looking for?
Let's work together to make you the perfect package!
Email: Kaylyn Fern, Director of Philanthropy
Kfern@thebluebench.org*



"Famished" by Erin Kaden



"Wasn't I Sacred, Too?" By Micah Ramirez



"Subira Huvuta Heri" (Patience Brings Relief)
by Rahmi