



THE BLUE BENCH PRESENTS THE FOURTH ANNUAL ART EXHIBITION

RISE

2025 SPONSORSHIP BROCHURE



RISE

The Blue Bench presents its fourth-annual art exhibition featuring **art made by survivors of sexual violence**.

RISE amplifies the **stories, voices, and healing journeys** of survivors in honor of Sexual Assault Awareness and Prevention Month.

In 2025, we have introduced the **RISE Together Gala**, an exclusive event for dedicated supporters of The Blue Bench to witness the exhibit before it opens to the public.



“Roses in Crackle” by
Laura Green



For Coloradans, 1 in 3 people experience some form of sexual violence, in their lifetime, 80% of which take place prior to the age of 25.

The Blue Bench is a **community of survivors, allies, and advocates** working to prevent sexual violence and build a safe and supportive metro Denver.

We work collaboratively to provide accessible, survivor-centered support services and empowering education.

“RISE is a place where I display my most vulnerable pieces to share with the world.”

– Tlalli
2023, 2024 RISE participant

“It was a really beautiful experience for me and I’m very grateful for The Blue Bench and everything they did to make it such a great success.”

– Kirstie K.
2023, 2024 RISE Participant

“Very diverse perspectives and powerful pieces.”

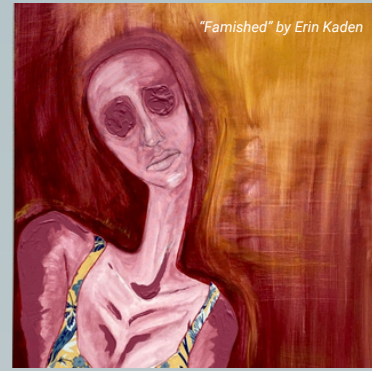
– Olivia D.
2024 RISE Participant

Your sponsorship will help elevate survivor's voices in our community.

Gallery

\$7,500
Partner

- Presenting sponsor recognition at opening reception
- Partnership included in press release
- 2 social media posts in April (6.3K reach)
- Name/logo included in:
 - All RISE collateral
 - Month long exhibition, including all related events
 - March and April e-newsletters (30k reach)
 - The Blue Bench Annual report
 - Logo and link on our website
- Six (6) tickets to the RISE Together Gala
- Logo on the RISE Together Gala Invite
- Verbal recognition at the RISE Together Gala



Exhibit

\$5,000
Partner

- 2 social media posts in April (6.3K reach)
- Name/logo included in:
 - Month long exhibition, including all related events
 - Logo and link on our website
 - March and April e-newsletters (30k reach)
- Four (4) tickets to the RISE Together Gala
- Verbal recognition at the RISE Together Gala



Print

\$2,500
Partner

- Two (2) tickets to the RISE Together Gala
- Logo on all prints of exhibition artwork
- 1 social media post in April (6.3k reach)
- Verbal recognition at the RISE Together Gala



Motif

\$1,000
Partner

- 1 social media post in April (6.3k reach)
- Logo included in April e-newsletter (30k reach)
- Verbal recognition at the RISE Together Gala



the blue bench
Ending sexual assault
through prevention & care
www.thebluebench.org

*Not seeing the sponsorship you're looking for? Let's work together to make you the perfect package!
Email Kaylyn Fern, Director of Philanthropy: Kfern@thebluebench.org*